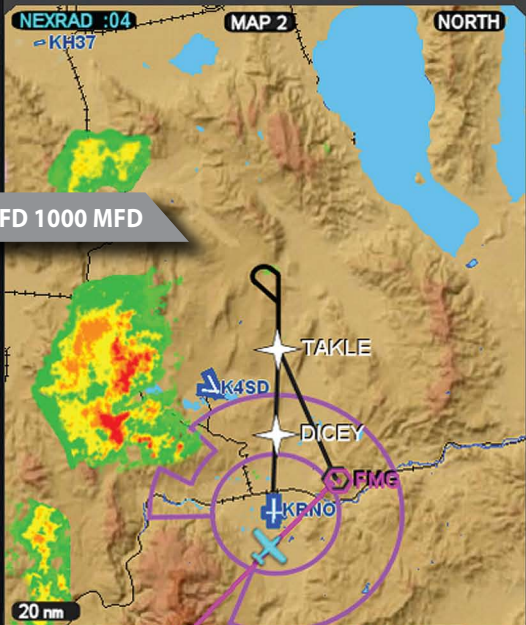




WPT FMG DIST 9.2 DTK 038°  
 GS 148 kt 20:44:36Z ETA 14:02



EFD 1000 MFD

REV

+ RNG -

MENU

-

-

-

-

-

PAN SAVE THUMB RECALL BOT

MODE SYNC

MODE SYNC

# EVOLUTION FLIGHT DISPLAY

EFD1000 MFD

## Your glass cockpit, expanded.

Built using the same hardware as your Evolution PFD, this EFD1000 MFD gives you a full duplicate set of sensors, works with your PFD to continually monitor its health, and can automatically become a backup PFD if your primary should deteriorate or fail. Add moving maps, datalink weather and traffic interfaces, a built-in terrain awareness system, flight planning pages and more to your panel.

For more information visit [www.aspenavionics.com](http://www.aspenavionics.com).



THE EFD1000 MFD'S INNOVATIVE FORM FACTOR  
INSTALLS EASILY NEXT TO YOUR PFD.

ASPEN AVIONICS™

A NEW WAY TO LOOK AT AVIONICS

[www.aspenavionics.com](http://www.aspenavionics.com)

### EFD1000 MFD FEATURES:

- Duplicate sensor set
- Integrity cross-checking with PFD
- Emergency reversion to PFD functions if PFD fails
- Sectional-style moving maps with hazard awareness overlays
- Customizable screen layouts
- Built-in backup battery

### Evolution Hazard Awareness

- Built-in terrain awareness with 3D visualization
- Traffic overlay on map via interface<sup>1</sup>
- Weather<sup>2</sup>

WX500 Stormscope interface

Datalink weather

Hi-res NEXRAD radar	AIRMETS
Radar coverage map	SIGMETS
Precipitation type (at surface)	Freezing level
TFRs	Echo tops
City forecasts	Storm weather tracks
County warnings	Surface weather analysis
Canadian weather warnings	Lightning
METARs	Winds aloft (by altitude)
TAFs	Satellite Mosaic (by altitude)

<sup>1</sup>Requires compatible traffic system.

<sup>2</sup>Requires Aspen Weather Receiver, WX500 Stormscope or equivalent.

### GENERAL SPECIFICATIONS:

Overall Dimensions	3.50"W x 7.00"H x 4.15"D
Weight	2.9 lbs. with mounting bracket
Display Type	6.0" Diagonal TFT Active Matrix LCD (400x760)
Display Backlight	High Intensity White LED
Display Colors	32,768

### OPERATIONAL SPECIFICATIONS:

Operating Temp	-20°C to +55°C
Storage Temp	-55°C to +85°C
Max Operating Alt. (Ambient)	35,000
Cooling	Integral Fan
Max Humidity	95% at 50°C
Input Voltage	+8 to +32 Volts DC
Max Current	2.4 Amps @ 28 Vdc, 4.8 Amps @ 14 Vdc

### CERTIFICATION CANDIDATES:

#### Technical Standard Order

TSO-C2d, TSO-C3d, TSO-C4c, TSO-C6d, TSO-C8d, TSO-C10b,  
TSO-C106, TSO-C113

#### Supplemental Type Certificate (STC)

Approved Model List (AML)<sup>3</sup>

<sup>3</sup> See [www.aspenavionics.com/approvals](http://www.aspenavionics.com/approvals) for the latest list of approved aircraft makes and models.

Features and specifications are subject to change without notice.

A NEW WAY TO LOOK AT AVIONICS™



The image shows the rear panel of a black avionics unit. At the top, there are two circular connectors. Below them is a large, rectangular multi-pin connector with two locking latches on either side. In the center, there is a circular cutout containing a square fan mounted on a heat sink. At the bottom, there are two more circular cutouts. The entire panel is secured with several screws.

ASPEN  AVIONICS™

A NEW WAY TO LOOK AT AVIONICS™

*EFD 1000 MFD shown actual size*